

Crown World Mobility

Press Kit

How the world works better
crownworldmobility.com

CROWN 
WORLD MOBILITY



About Crown World Mobility

Crown World Mobility partners with corporations to provide intelligent program management solutions for the global workforce.

Crown World Mobility works in partnership with corporations across the globe to provide comprehensive and customized global mobility management solutions to support management strategies. Our regional mobility service centers of excellence are strategically located across the globe, supporting more than 83 offices in more than 42 countries with their customer-facing and back-office requirements. With over 50 years' experience offering domestic and international mobility services, we align ourselves with each organization's objectives to look after the people, policies and procedures of global assignments.

Our service capabilities include:

- Assignment management services
- Domestic and international moving services
- Destination services
- Global visa and immigration services
- Mobility program administration
- Home sale and home finding services
- Financial and compensation services
- Consulting services
- Global skills services
- FLEX – self service tool
- Supply chain management

In addition to supporting business objectives, Crown World Mobility understands that people are an organization's most valuable resource. We have exceptional experience in moving senior executives, diplomats, managers, engineers, specialists and their families to new assignments throughout the world.



Crown Worldwide Group



Founder and Chairman:

James E. Thompson

Executive Board:

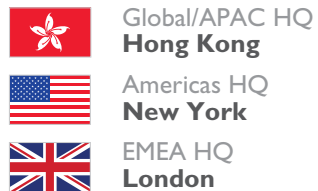
Group and APAC CEO
Ken Madrid

CEO EMEA
Barry Koolen

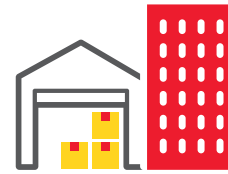
CEO Americas
Jennifer Harvey

Group VP,
World Mobility
Jurgen Zyderveld

Privately held company
Established in 1965



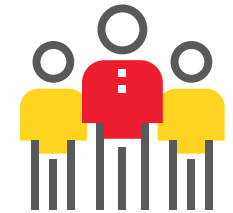
Nationalities
69



Facilities
276



Revenue
US\$ 668
million

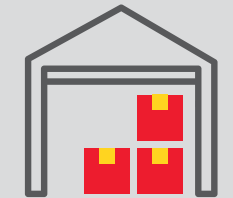


Employees over
4,000

Value of owned properties



Corporate clients over
15,000



Warehouse space over
8.5 million ft² / 790,000 m²

*Correct as at October 2019

Crown World Mobility



Privately held company
Established in 1965



83



68



1,703



1,545 Corporate clients



190 countries



Global/APAC HQ
Hong Kong



Americas HQ
New York



EMEA HQ
London

*Correct as at October 2019

Crown Worldwide Group's Divisions



crownworldmobility.com

World Mobility

- Assignment management services
- Domestic and international moving services
- Destination services
- Global visa and immigration services
- Mobility program administration
- Home sale and home finding services
- Financial and compensation services
- Consulting services
- Global skills services
- FLEX – self service tool
- Supply chain management



crownrelo.com

Relocations

- Domestic and international moving services
- Pet relocations
- Online tracking tools
- Secure storage facilities
- Crown Care transit protection
- Destination settling-in and departure services
- Employee and family support
- Immigration services



crownrms.com

Records Management

- Document management and storage
- Secure data destruction
- Vault storage
- Media management and back-up
- Digital archive management and reporting
- Information management consulting
- Imaging and scanning



crownfineart.com

Fine Art

- Packing and crating
- Storage
- Fine art installation
- Specialist fine art logistics advice
- Art transport and shipping
- Artlines – European shuttle service



crownworkspace.com

Workspace

- Office moving
- Interior design
- Project move management
- Storage
- IT services
- Recycling and disposal



crown-logistics.com

Logistics

- International freight forwarding
- Oil and gas logistics
- Hotel logistics
- Furniture, fixtures and equipment



crownwinecellars.com

Wine Cellars

- Wine storage and long-term maturation in underground cellars
- Private members club

Crown Worldwide Group's Chairman

James E. Thompson is Chairman of the Crown Worldwide Group. In 1965, he founded the company in Yokohama, Japan. Today the company is headquartered in Hong Kong and employs over 4000 people in over 50 countries and is the market leader in relocation, mobility, information management, fine art transportation, workspace and logistics, which includes oil and gas project management as well as luxury goods warehousing and distribution.

Mr. Thompson has received numerous accolades for demonstrating business growth with a commitment to corporate social responsibility. Most recently, he received the Directors of the year award in 2018 organized by the Hong Kong Institute of Directors. In 2003 he was awarded Hong Kong's Gold Bauhinia Star, an award only given to a select few in Hong Kong society that recognizes involvement and support of Hong Kong's local communities. In addition to his work with several prestigious organizations, Mr. Thompson has served as a delegate representing Hong Kong on the Hong Kong Trade Development Council's trade missions around the world.

In addition to Crown, Mr. Thompson serves as a Board member for several prominent industry organizations. Known for his philanthropy, he also serves with a number of charitable organizations and university mentorship programs. He and his wife Sally are especially interested in charities that focus on children's health and education.



Contact Information



Please visit our [Press Center](#) where you can read our latest press releases, news, market insights and resources. Learn more about our industry experts, who are available for interviews and speaking engagements. We encourage the media to visit our website and welcome the use of our pictures, articles and stories in the press.

Media contacts:

When you get in touch, please provide us with your details including your name, email, a brief description of your inquiry and any other relevant information.

Crown Communications

Crown Worldwide
345 Southbury Road,
Enfield, EN1 1TW
England
communications@crownew.com

Headquarters:

Global and Asia-Pacific:

Crown Worldwide Holdings Limited
Suite 2001, China Evergrande Centre
38 Gloucester Road, Wan Chai
Hong Kong
Tel: +852 2528 6111
holdings@crownew.com

Americas:

Crown Group
200 Mac Lane, Keasbey
New Jersey 08832
United States
Tel: +1 800 879 3326
americas@crownew.com

Europe/Middle East/Africa:

Crown Worldwide Group
19 Stonefield Way, South Ruislip, London
HA4 0BJ, United Kingdom
Tel: +44 20 3697 8484
emea@crownew.com

Crown websites:

[Crown Worldwide](#)
crownew.com

[Crown World Mobility](#)
crownewworldmobility.com

[Crown Relocations](#)
crownewrelo.com

[Crown Records Management](#)
crownewrms.com

[Crown Fine Art](#)
crownewfineart.com

[Crown Workspace](#)
crownewworkspace.com

[Crown Logistics](#)
crownew-logistics.com

[Crown Wine Cellars](#)
crownewwinecellars.com

How the world works better
crownewworldmobility.com

